



Property Features

- A Stunning Four Bedroom Detached Home
- Located in the Abbey Barn Park Development
- A Newly Built Community In A Tranquil Countryside Setting
- En-Suite Shower to Main Bedroom
- High Standard Throughout
- Lounge with Patio Doors to Rear Garden
- Garage and Parking
- Downstairs Office
- Furnished
- Available From Late October 2023

Full Description

A stunning four-bedroom detached home, located in the Abbey Barn Park Development, a newly built community in a tranquil countryside setting. This property is offered to the rental market for the first time, built by Berkley Homes just 3 years ago, this home is completed to an extremely high specification and offers modern, light, and airy accommodation.

The internal accommodation offers; entrance hallway which leads to a spacious kitchen/diner with patio doors to the garden; utility room; main reception room; downstairs WC and office. Upstairs offers four bedrooms, two of which have en-suite shower. The upstairs also offers the main family bathroom. To the external of the property the property benefits from a good-sized garden, garage, and parking for 2-3 cars.

High Wycombe has something for everyone- The town offers an array of restaurants and local pubs, making it the ideal destination to wine and dine. It also has an impressive shopping centre, Eden Shopping Centre, which includes a cinema complex for those who want to catch the latest movie releases.

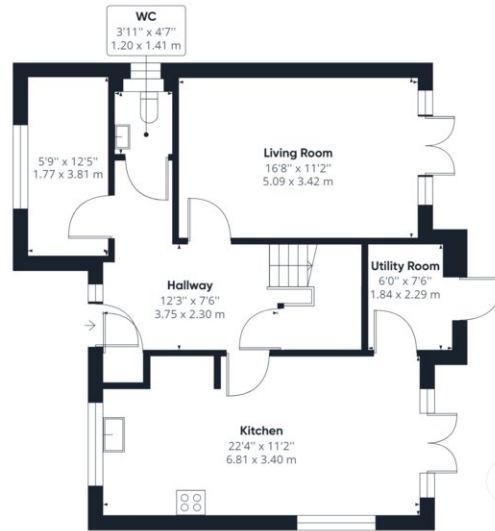
Abbey Barn Place place where you can start the day with a peaceful morning stroll, where children can play freely, and where you can step out your front door and enjoy a superb 34-acre country park. With woodland walks, a fitness trail, a wellness garden, play areas, allotments and a community orchard, there is something for everyone to enjoy.







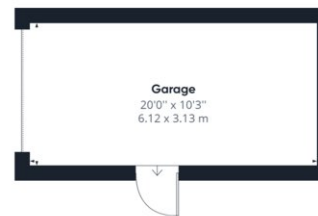




Ground Floor Building 1



Floor 1 Building 1



Ground Floor Building 2

Approximate total area⁽¹⁾

1654.84 ft²
153.74 m²

(1) Excluding balconies and terraces

While every attempt has been made to ensure accuracy, all measurements are approximate, not to scale. This floor plan is for illustrative purposes only.

GIRAFFE360