



Property Features

- 2 Bedroom Detached Bungalow
- Development Potential STPP
- Sought After Hazlemere Location
- Expansive Rear Garden with Elevated Views
- Living Room Leading to Dining Room
- Kitchen
- Family Bathroom with Separate WC
- Front Garden with Driveway Parking and Garage
- Walking Distance of Cosy Corner Shopping Arcade
- EPC 60 D / Council Tax Band E

Full Description

Nestled within the serene and sought-after neighbourhood of Hazlemere, this delightful detached bungalow with an expansive rear garden presents an exceptional opportunity for modernisation and improvement STPP.

The bungalow comprises of 2 bedrooms, a family bathroom, a living room, dining room and kitchen. The good sized lounge connects the living room and dining area, making it perfect for entertaining guests or enjoying quality family time. Patio doors from the dining room lead directly out onto the expansive rear garden, allowing you to relish the surrounding natural beauty. The kitchen offers space for a range of appliances, abundant worktop space and cupboards that provides storage solutions for all your culinary needs and has space for a kitchen table. It also has the added benefit of access to the rear garden as well as two windows to view the garden beyond. The property features two generously sized bedrooms, each with large windows allowing plenty of natural light offering views of the surrounding front and rear gardens.

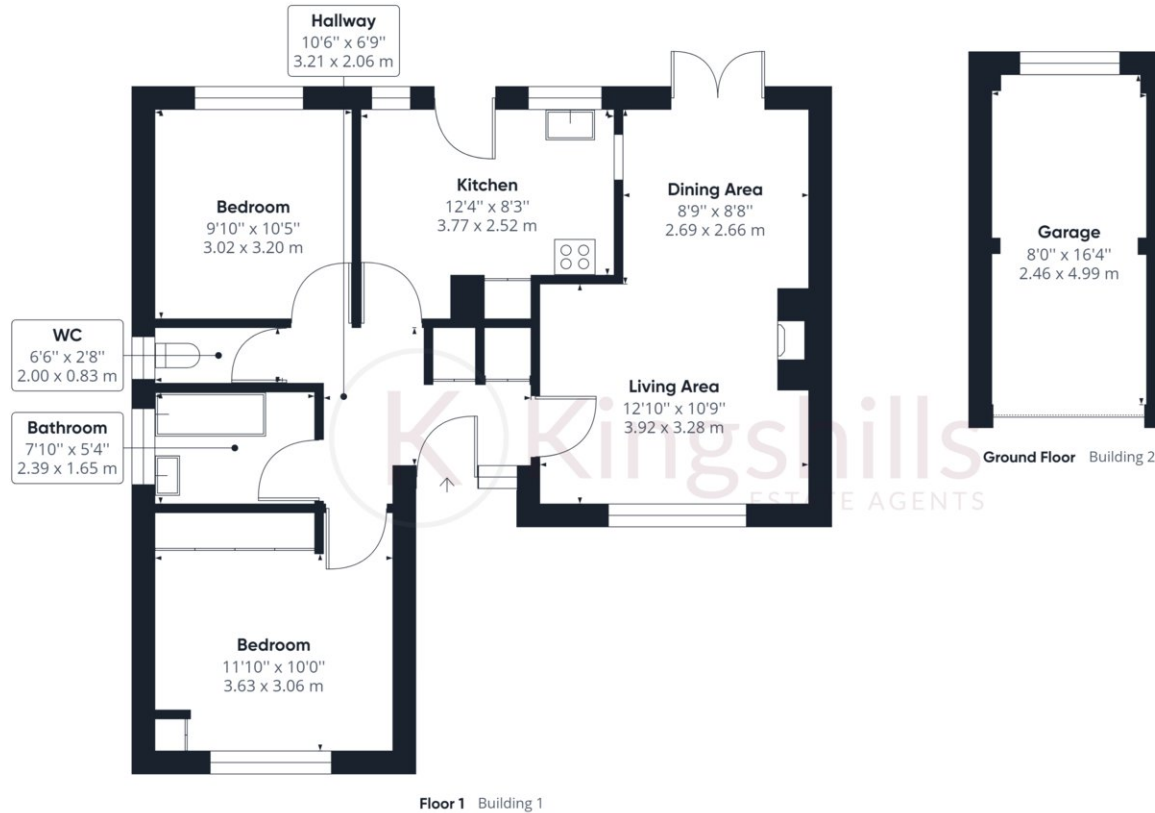
To the outside, the front garden welcomes you with its lush greenery and well-maintained landscaping. A stepped pathway leads to the entrance, creating an inviting atmosphere for you and your guests. The property benefits from a long driveway that can accommodate multiple vehicles as well as a garage, ensuring convenience for both residents and visitors.

The pièce de résistance of this property is its expansive rear garden with captivating elevated views. Stepping outside, you are greeted by a vast outdoor space that provides endless possibilities. Whether you envision creating a vibrant garden, or an outdoor entertaining area, this garden offers the canvas to bring your dreams to life. The elevated views add an extra touch of enchantment, allowing you to enjoy the beauty of the surrounding area.

This remarkable bungalow is situated in the desirable area of Hazlemere, Buckinghamshire, known for its picturesque landscapes, charming community, and convenient amenities. With easy access to local shops, schools, parks, and transportation, you'll enjoy a harmonious blend of suburban tranquility and urban convenience.







Approximate total area⁽¹⁾

868.84 ft²

80.72 m²

(1) Excluding balconies and terraces

While every attempt has been made to ensure accuracy, all measurements are approximate, not to scale. This floor plan is for illustrative purposes only.

GIRAFFE360